



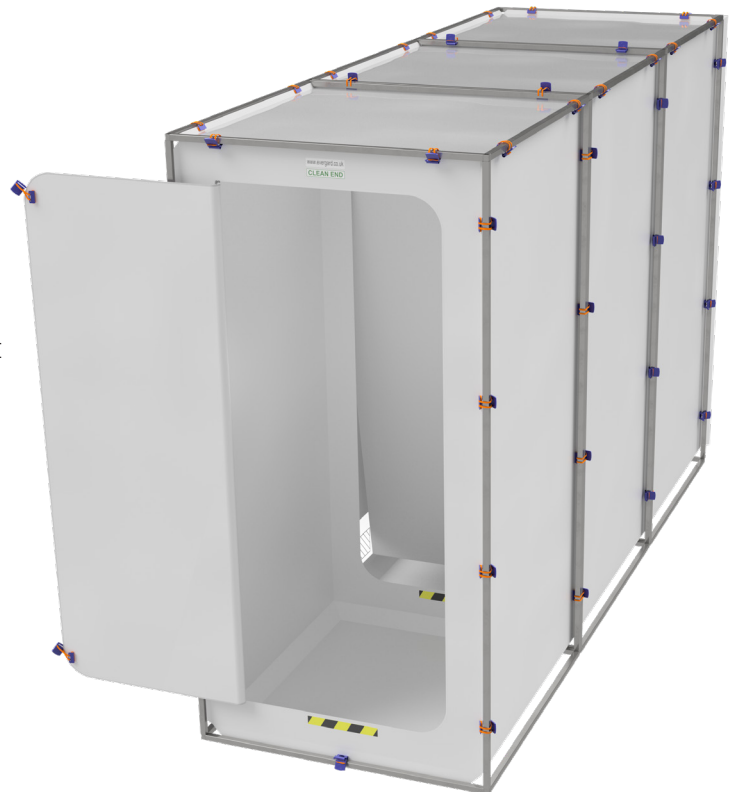
Speedtent

Disposable Decontamination Tents

The Speedtent is a disposable tent system suitable for use as a multi-stage airlock and is ideally suited for the asbestos removal industry. The Speedtent can be simply and quickly constructed, with the disposable tent skins being affixed to the cube speedframe via quick fix clips. As the cube speedframe remains outside of the tent skin, it does not become contaminated during works and can be used again.

Features include:

- Quick & easy set up - offering a quicker alternative to traditional timber and polythene set ups
- Range of sizes & stages available to suit various projects
- Tough and robust once assembled
- Reduce site waste as all tent frames are reusable, with the tent skins taking up less space in an asbestos skip compared to timber
- Pre-cut D-Door with double zip for easy access/exit
- Pre-tinted vision panel provided for deflection flap inspection
- Correct weighted internal section flaps to ensure accurate flap deflection, when used with the appropriate NPU
- Hazard tape included between each section to prevent slips, trips & falls
- Redesigned skin with additional clips throughout to improve tautness and visual appearance
- Can be easily attached to enclosure thanks to 'skirt' on Dirty end of the tent



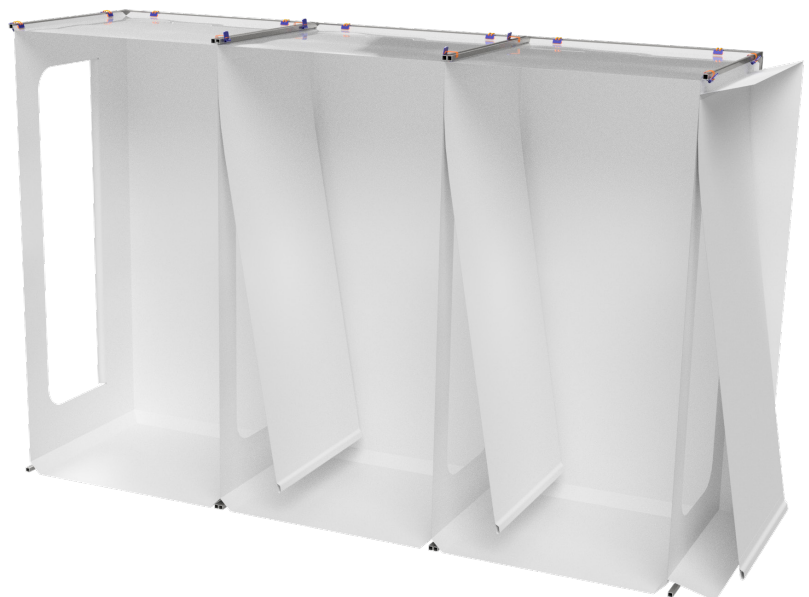
Quick-Fix Clips



Accessories Included

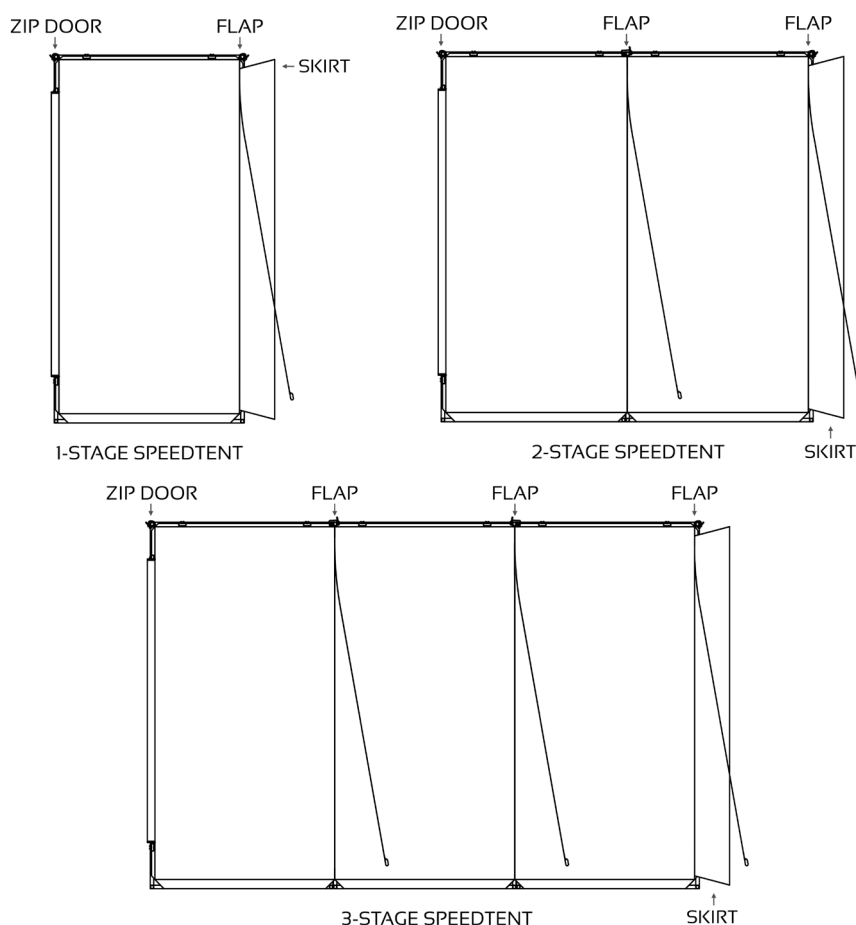
- Viewing panels
- Coverall hangers for use inside the tent
- Compliant signage:
 - 3 x 4-part Asbestos Warning signs
 - 'Dirty End' & 'Clean End' labels

3-Stage Speedtent



Code	Product	Contents
B003004	Speedtent, 60cm x 60cm x 2m, 1 Stage	1 x D-Door, 2 x additional weighted flaps
B000974	Speedtent, 60cm x 60cm x 2m, 3 stage	1 x D-Door, 2 x weighted flaps pre-welded to tent skin between each compartment, 2 x additional weighted flaps
B003006	Speedtent, 74cm x 74cm x 2m, 1 stage	1 x D-Door, 2 x additional weighted flaps
B003007	Speedtent, 74cm x 74cm x 2m, 2 stage	1 x D-Door, 1 x weighted flap pre-welded to tent skin between each compartment, 2 x additional weighted flaps
B000965	Speedtent, 74cm x 74cm x 2m, 3 stage	1 x D-Door, 2 x weighted flaps pre-welded to tent skin between each compartment, 2 x additional weighted flaps
B000960	Speedtent 90cm x 90cm x 2m, 3 Stage	1 x D-Door, 2 x weighted flaps pre-welded to tent skin between each compartment, 2 x additional weighted flaps
B000962	Speedtent 1m x 1m x 2m, 1 Stage	1 x D-Door, 2 x additional weighted flaps
B000961	Speedtent 1m x 1m x 2m, 2 Stage	1 x D-Door, 1 x weighted flap pre-welded to tent skin between each compartment, 2 x additional weighted flaps
B000963	Speedtent 1m x 1m x 2m, 3 Stage	1 x D-Door, 2 x weighted flaps pre-welded to tent skin between each compartment, 2 x additional weighted flaps
B000972	Speedframe Metal Cube 60cm x 60cm x 2m	2 x 60cm square frames (top and bottom), 4 x 2m metal poles
B000968	Speedframe Metal Cube 74cm x 74cm x 2m	2 x 74cm square frames (top and bottom), 4 x 2m metal poles
B000970	Speedframe Metal Cube 90cm x 90cm x 2m	2 x 90cm square frames (top and bottom), 4 x 2m metal poles
B000971	Speedframe Metal Cube 1m x 1m x 2m	2 x 1m square frames (top and bottom), 4 x 2m metal poles

Speedtent Diagrams



Contact your nearest branch to order

Romsey
01794 52 4000
romsey@smhproducts.com

Bristol
0117 403 3665
bristol@smhproducts.com

London
0127 781 0035
london@smhproducts.com

Birmingham
0121 328 6000
birmingham@smhproducts.com

Leeds
0113 279 9003
leeds@smhproducts.com

Glasgow
0141 556 6600
glasgow@smhproducts.com

St Helens
01794 52 4000
romsey@smhproducts.com

Washington
0191 456 6002
washington@smhproducts.com

www.smhproducts.com